

# PANPASTEL®



## Apply Pastel Color Like Paint



PanPastel.com

### What Are PanPastel Colors?

PanPastel Colors are professional artists' quality soft pastel colors in a unique pan format (cake-like). The special qualities of PanPastel Colors mean that artists can blend and apply pastel (dry) color like paint for the first time.

They are made using a unique manufacturing process resulting in rich, ultra soft and super-blendable colors. Each color is loaded with the finest quality artists' pigments for the most concentrated colors possible. The colors have excellent lightfastness and are fully erasable.

#### Great for mixed media including with:

- Pencils
- Pastel Sticks
- Inks
- Acrylics
- Acrylic Grounds
- Watercolors
- Encaustic
- Polymer Clay
- Markers

Compatible with all pastel fixatives & varnishes

DOWNLOAD PANPASTEL TECHNIQUES BOOK:  
PanPastel.Com



APPLY WITH  
**Sofft® TOOLS**



#### JOANNE BARBY

"PanPastel has changed my life and I'm not just saying that! It is a perfect fit for the way I see the world and how I apply color to paper, plus it has literally opened up a world of possibilities to me!"  
@JoanneBarby

Joanne Barby  
"The Flow of Feathers"

### COLORS

Hansa Yellow Ex. Dark 220.1 PY3 ****	Diaryl. Yellow Ex. Dark 250.1 PY83 ****	Yellow Ochre Ex. Dark 270.1 PY42 ****	Orange Extra Dark 280.1 P062 ****	Perm. Red Ex. Dark 340.1 PR254 ****
Hansa Yellow Shade 220.3 PY3 ****	Diaryl. Yellow Shade 250.3 PY83 ****	Yellow Ochre Shade 270.3 PY42 ****	Orange Shade 280.3 P062 ****	Perm. Red Shade 340.3 PR254 ****
Hansa Yellow 220.5 PY3 ****	Diaryl. Yellow 250.5 PY83 ****	Yellow Ochre 270.5 PY42 ****	Orange 280.5 P062 ****	Permanent Red 340.5 PR254 ****
Hansa Yellow Tint 220.8 PY3 **	Diaryl. Yellow Tint 250.8 PY83 **	Yellow Ochre Tint 270.8 PY42 ****	Orange Tint 280.8 P062 **	Permanent Red Tint 340.8 PR254 **
Phthalo Green Ex. Dark 620.1 PG7 ****	Perm. Green Ex. Dark 640.1 PG50 ****	Chrom. Ox. Gm Ex. Dark 660.1 PG17 ****	Bt. Yell. Green Ex. Dark 680.1 PY3/PG17 ****	Red Iron Ox. Ex. Dark 380.1 PR101 ****
Phthalo Green Shade 620.3 PG7 ****	Perm. Green Shade 640.3 PG50 ****	Chrom. Ox. Green Shade 660.3 PG17 ****	Bt. Yell. Green Shade 680.3 PY3/PG17 ****	Red Iron Oxide Shade 380.3 PR101 ****
Phthalo Green 620.5 PG7 ****	Permanent Green 640.5 PG50 ****	Chromium Oxide Green 660.5 PG17 ****	Bright Yellow Green 680.5 PY3/PG17 ****	Red Iron Oxide 380.5 PR101 ****
Phthalo Green Tint 620.8 PG7 **	Permanent Green Tint 640.8 PG50 ****	Chrom. Ox. Green Tint 660.8 PG17 ****	Bt. Yellow Green Tint 680.8 PY3/PG17 ****	Red Iron Oxide Tint 380.8 PR101 ****

Conforms to  
ASTM D-4236



Pearl Medium - White FINE 011 ****	Pearl Medium - Black FINE 013 PBk7 ****	Colorless Blender 010 ****
Pearl Medium - White COARSE 012 ****	Pearl Medium - Black COARSE 014 PBk7 ****	

Pans contain 40%<sup>†</sup> more than average soft pastel sticks,  
& yield at least 4-5 times more coverage.

<sup>†</sup> Average, based on a survey of leading brands. See PanPastel.com

Colors are independently tested for lightfastness:  
\*\*\*\* Extremely Permanent \*\*\* Permanent \*\* Durable

Patented. For details see <http://www.panpastel.com/pats.html>

### Apply Pastel Color Like Paint

4-5 Times<sup>†</sup>  
More Coverage  
Than Sticks!

### 92 Highly Pigmented Colors + 5 Mediums

80 Original Colors: 20 Pure Colors (mass tones), 20 Tints, 20 Shades, 20 Extra Darks Plus 6 Metallics & 6 Pearlescents. Available individually & in sets.

Magenta Extra Dark 430.1 PR122 ****	Violet Extra Dark 470.1 PV23 ****	Ultra. Blue Ex. Dark 520.1 PB29 ****	Phthalo Blue Ex. Dark 560.1 PB15 ****	Turquoise Ex. Dark 580.1 PG50/PB36 ****
Magenta Shade 430.3 PR122 ****	Violet Shade 470.3 PV23 ****	Ultra. Blue Shade 520.3 PB29 ****	Phthalo Blue Shade 560.3 PB15 ****	Turquoise Shade 580.3 PG50/PB36 ****
Magenta 430.5 PR122 **	Violet 470.5 PV23 ****	Ultramarine Blue 520.5 PB29 ****	Phthalo Blue 560.5 PB15 ****	Turquoise 580.5 PG50/PB36 ****
Magenta Tint 430.8 PR122 **	Violet Tint 470.8 PV23 **	Ultramarine Blue Tint 520.8 PB29 ****	Phthalo Blue Tint 560.8 PB15 **	Turquoise Tint 580.8 PG50/PB36 ****
Burnt Sienna Ex. Dark 740.1 PR101:1 ****	Raw Umber Ex. Dark 780.1 PBk7 ****	Paynes Grey Extra Dark 840.1 PBk7/PW6 ****	Neutral Grey Ex. Dark 820.1 PW6/PBk7 ****	Neutral Grey Tint 820.7 PW6/PBk7 ****
Burnt Sienna Shade 740.3 PR101:1 ****	Raw Umber Shade 780.3 PBk7 ****	Paynes Grey 840.3 PBk7/PW6 ****	Neutral Grey Ex. Dark 820.2 PW6/PBk7 ****	Neutral Grey Tint 820.8 PW6/PBk7 ****
Burnt Sienna 740.5 PR101:1 ****	Raw Umber 780.5 PBk7 ****	Paynes Grey Tint 840.7 PBk7/PW6 ****	Neutral Grey Shade 820.3 PW6/PBk7 ****	Black 800.5 PBk7/PBk11 ****
Burnt Sienna Tint 740.8 PR101:1 ****	Raw Umber Tint 780.8 PBk7 ****	Paynes Grey Tint 840.8 PBk7/PW6 ****	Neutral Grey 820.5 PW6/PBk7 ****	Titanium White 100.5 PW6 ****

Light Gold 910.5 ****	Silver 920.5 PBk7 ****	Bronze 930.5 ****
Rich Gold 911.5 ****	Pewter 921.5 PBk7 ****	Copper 931.5 ****
Pearlescent Yellow 951.5 PY3 **	Pearlescent Orange 952.5 P062 **	Pearlescent Red 953.5 PR254 **
Pearlescent Violet 954.5 PV23 **	Pearlescent Blue 955.5 PB15 **	Pearlescent Green 956.5 PG50 ****

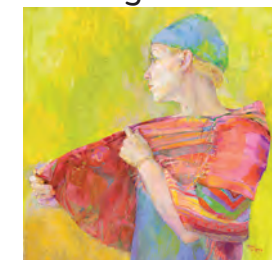
#### Color Range indicated by item codes as follows:

- **Pure** colors (mass tones) (xxx.5)
  - **Tints** (xxx.7 / xxx.8) = pure colors plus white
  - **Shades** (xxx.3) = pure colors plus black
  - **Extra Darks** (xxx.1 / xxx.2) = pure colors plus more black
- PR101:1 = Color index no. for pigments

### Studio Accessories



### Painting



Sydney McGinley "Woman in Patterned Wrap"  
PanPastel & pastel stick on sanded pastel paper

#### SYDNEY MCGINLEY

"PanPastel allows me the freedom to use tools such as the Sofft Sponges to add to my mark-making. With a Sofft Sponge loaded with PanPastel Color I am able to make a swathe on the paper surface which can stand alone or become a layer to hold pencil or stick. The area can be fresh and alive with just the PanPastel alone. More layering is possible if desired."

SydneyMcGinley.com

### Drawing

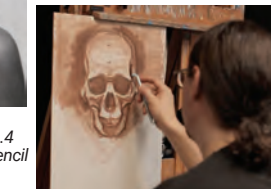


David Kassan "Aubrey"  
PanPastel Black & Sofft Knife No.4  
& General Pencil White Charcoal Pencil

#### DAVID KASSAN

"I've been using PanPastel now for the past 8 years, I started using them for the basic block-ins for my charcoal drawings, because they offer the artist a painterly expressive approach to handling an otherwise linear approach. PanPastel has really changed the way I make paintings & drawings, it has given my realist work an expressive foundation on which to build on."

DavidKassan.com



Using PanPastel for underpainting for oil painting  
From "Premier Coup" DVD  
by David Kassan

### Mixed Media



PanPastel over modeling paste -  
Donna Downey Video Workshop  
at PanPastel.com

#### DONNA DOWNEY

"PanPastel Colors make painting easy, quick and for some reason they make me feel free. I can do things with PanPastel that I couldn't think about doing with paint and the fact that they are erasable... AWESOME!"

DonnaDowney.com

ARTIST INTERVIEWS  
TECHNIQUES &  
INSPIRATION AT  
PaintDrawBlend.com

# PANPASTEL®

## The Revolutionary New Way To Use Color

#### Unique Pan Format

Enables pastel color to be applied like paint for the first time.

#### Instant Color

No preparation or drying time.  
No solvents / water needed.

#### Erasable

Use any eraser to easily change/correct. Very forgiving.

#### Mixable

Ultra soft colors - blend like paint for an infinite palette of colors.

#### Functional Packaging

Plastic base keeps colors separate & clean. Thread together for compact storage.

#### Highly Pigmented

92 Rich concentrated colors\*  
Professional quality & lightfast.

#### Mixed Media Friendly

Use with other artist's media & most surfaces.

#### Low Dust

For a cleaner working environment. Less waste.

\*Each pure color has a corresponding tint, shade & extra dark (as shown).

painting | drawing | mixed media

Info: PanPastel.com

Blog & Tutorials: PaintDrawBlend.com

Made in USA

info@panpastel.com  
Colorfin LLC, Kutztown, PA 19530, USA  
© Colorfin LLC. All rights reserved.

Ref: 980007818



# Sofft Tools

Sofft Tools - a new generation of applicators for artists, made from our specially formulated **micropore sponge** for applying PanPastel. Available in a wide variety of sponge-based tools with unique shapes and sizes based on artist's brush shapes.

Use with  
PanPastel &  
Water-Based  
Media

## Micropore Sponge

Our specially formulated micropore sponge holds and releases just the right amount of color.

- **Easy to clean** - wipe on a paper towel between colors. Washable.
- **Non-Abrasive** - for a smooth uniform finish.
- **Versatile** - use with PanPastel and any water-based medium. (With inks, acrylics etc. there is no brush stroke. Great for glazes.)
- **Reusable** - can be re-used multiple times.

## Knives & Covers



Match the reference number / shape of the Cover to the Knife e.g. use Cover No.1 with Knife No.1.



Gently pull Sofft Cover completely over Knife tip (like a sock). Covers can be re-used several times.



**TIP** Change line weight by varying pressure on Sofft Tools. Also manipulate sponges & use edges for different size marks.

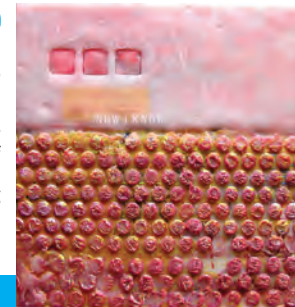
## ENCAUSTIC

PATRICIA BALDWIN SEGGEBRUCH

"I am doing things very differently now that I've had the opportunity to fall in love with PanPastel!"

I use PanPastel in many different ways with my encaustic painting. The most deliberate use of them is to 'blush' or 'tint' the wax as I apply layers of medium and encaustic color. This blushing offers more layering and depth development than is possible with just encaustic colors."

PBSArtist.com



## Knives & Covers

When used with Sofft Covers, the traditional painting knife is transformed into a multi-use and absorbent applicator for many techniques. Covers are made from our micropore sponge which is semi-absorbent. Each knife has been ergonomically designed to fit in the hand for ease of use and good control.



**Round** Knife: 65001  
Covers: 62001  
**Flat** Knife: 65002  
Covers: 62002  
**Oval** Knife: 65003  
Covers: 62003  
**Point** Knife: 65004  
Covers: 62004



**Refill Covers Single Shapes** 62001-4  
Packs of 10



**Refill Covers Mixed Pack** 62100  
Pack of 40

Knives & Covers are numbered 1-4 for easy ID

## Free Video Tutorials at PanPastel.com



Deborah Secor  
Landscape Workshop

## Sponge Applicators

Sofft®



**Mixed Pack - Sponge Bars** 61100  
Pack of 4



**Sponge Bars**  
For general application & blending.  
Medium size marks.



**Round** 61021  
**Flat** 61022  
**Wedge** 61023  
**Point** 61024  
Single shape packs of 3 sponge bars

## Art Sponges

Perfect for blocking in large areas for underpaintings & backgrounds.



**Big Oval** 61041  
Pack of 1  
**Angle Slice Flat** 61031  
Pack of 2  
**Angle Slice Round** 61030  
Pack of 2  
**Round** 61042  
Pack of 4



**Starter Set** 69102

## Applicators

For applying color to small areas. Smaller mark size.



**Mini Applicator** 63052  
Pack of 12



**Applicator Handle with Replaceable Heads** 63070  
1 handle & 4 heads

**Replaceable Heads** 63071  
Pack of 8



**Combination Set** 69100

SofftArt.com

## Using PanPastel



**LIFT** Swipe Sofft Tool over pan surface 1-3 times (circular motion).  
*Tip: Swiping pan's surface more than necessary will generate excess dust.*



**MIX** colors, like paint, to create intermediate colors. *Note: traditional color mixing rules apply, e.g. don't overblend to avoid "mud".*



**APPLY** like paint to working surface/paper. Reload tool with color as required.



**BLOCK-IN** Use PanPastel to lay down an underpainting as a base for painting with PanPastel, pastel sticks, colored pencils and other media.



## EASY CLEAN-UP

**TOOLS** Use the same tool with several colors. "Clean" Sofft Tools between colors by wiping on a dry paper towel.



Colors are erasable with any eraser. Removing color & making corrections is easy.



**PANS** If a pan surface is contaminated with another color, "clean" pan by gently wiping away the contamination with a clean Sofft sponge or paper towel.

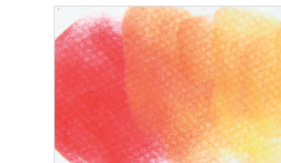
## Surfaces:

PanPastel can be used on most art & craft surfaces, from smooth to textured, including:

- Drawing Papers ► All Pastel Surfaces
- Vellum ► Canvas ► Wood
- Printmaking Papers ► Watercolor Papers
- Handmade & Delicate Papers

## Painting

Uniquely, for pastel color, PanPastel Colors can be mixed like paint for a complete painting palette. The color range also offers a selection of pre-mixed colors as tints, shades & extra darks.



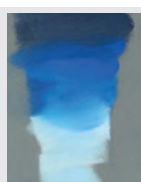
Mix colors like paint to create intermediate colors.



**Layering** - applying thinner layers & glazing layers allows colors underneath to show through. Several layers can be applied without flooding the paper's "tooth".



Multiple loading - try double or triple loading Sofft Tools for mixing.



Blending with Phthalo Blue (560) Extra Dark, Shade, Pure & Tint.



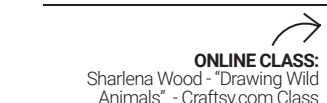
Colors can also be applied in heavier layers on textured papers for more opaque effects.

## Drawing



## QUICK SKETCHES

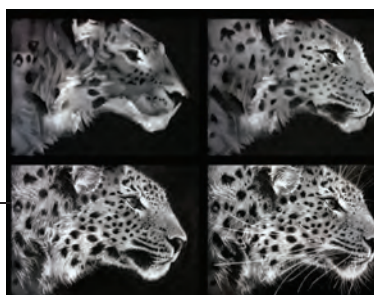
PanPastel is a great way to render quick sketches for color studies, underpaintings etc.



PanPastel White on black paper

## SUBTRACTIVE TECHNIQUES

Tone paper using PanPastel and one of the larger Sofft Sponges (Angle Slice or Big Oval). Then use any eraser for subtractive drawing techniques.



## Colorless Blender

One of the most important & unique characteristics of PanPastel Colors is that they are dry (pastel) colors that can be mixed like fluid paints. They "flow" even though they are dry. The Colorless Blender further enhances the "flow" and extends the blending possibilities of PanPastel.

**The first colorless blender for soft pastels.**  
Use to increase color "flow" & transparency. Great for a variety of blending effects and for softening edges.



**Using Colorless Blender:**  
Color can be extended (diluted) & becomes more transparent, but the color itself remains the same.

**Mixing with White:**  
Changes the color by tinting it, making it more opaque.

## Metallics & Pearls

A range of rich metallic & pearlescent colors which can be used on their own, or mixed with other PanPastel Colors to create a subtle luster or shimmer.

**TIP:** For custom metallics & pearlescents: mix with original PanPastel Colors

Joanne Barby uses PanPastel Metallic & Pearlescent Colors to add luminosity & dimension to her paintings. Including for this owl painting which is featured in a free online video.

**Free Video Tutorials** at PanPastel.com



@JoanneBarby

## Follow Us:

**Instagram/Twitter:** @PanPastel  
**Facebook:** PanPastelColors  
**YouTube:** PanPastel  
**Blog/Videos:** PaintDrawBlend.com  
**Website:** PanPastel.com