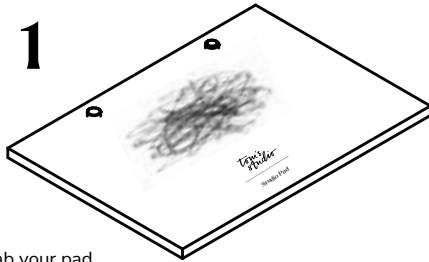


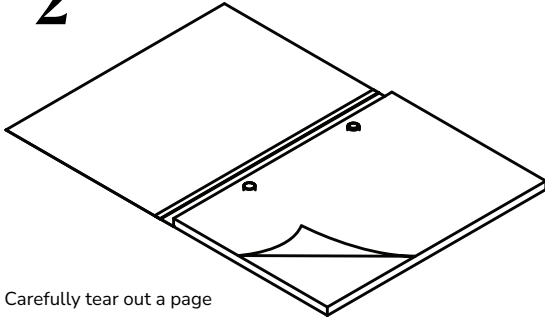
Studio Pad - Page Guide Instructions

1



Grab your pad

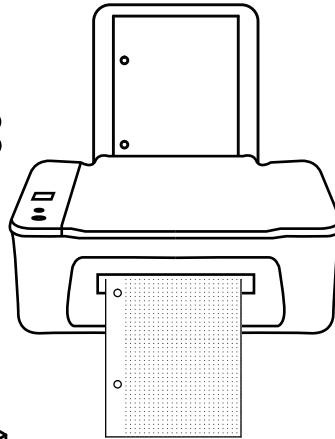
2



Carefully tear out a page

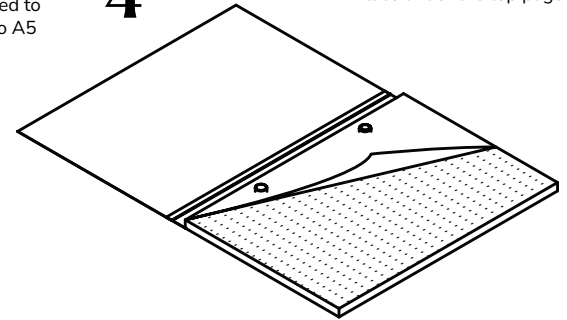
3

Pop the page in your printer with holes aligned to the left. Before. Make sure your print is set to A5 and "do not scale" or 100%



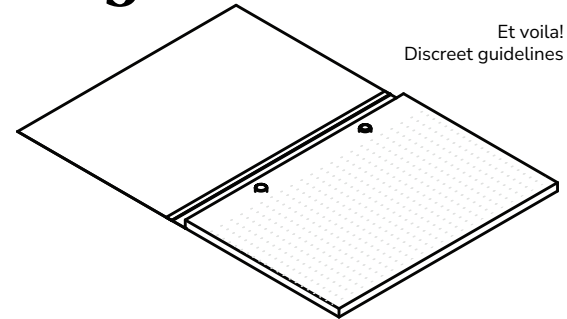
4

Place under the top page



5

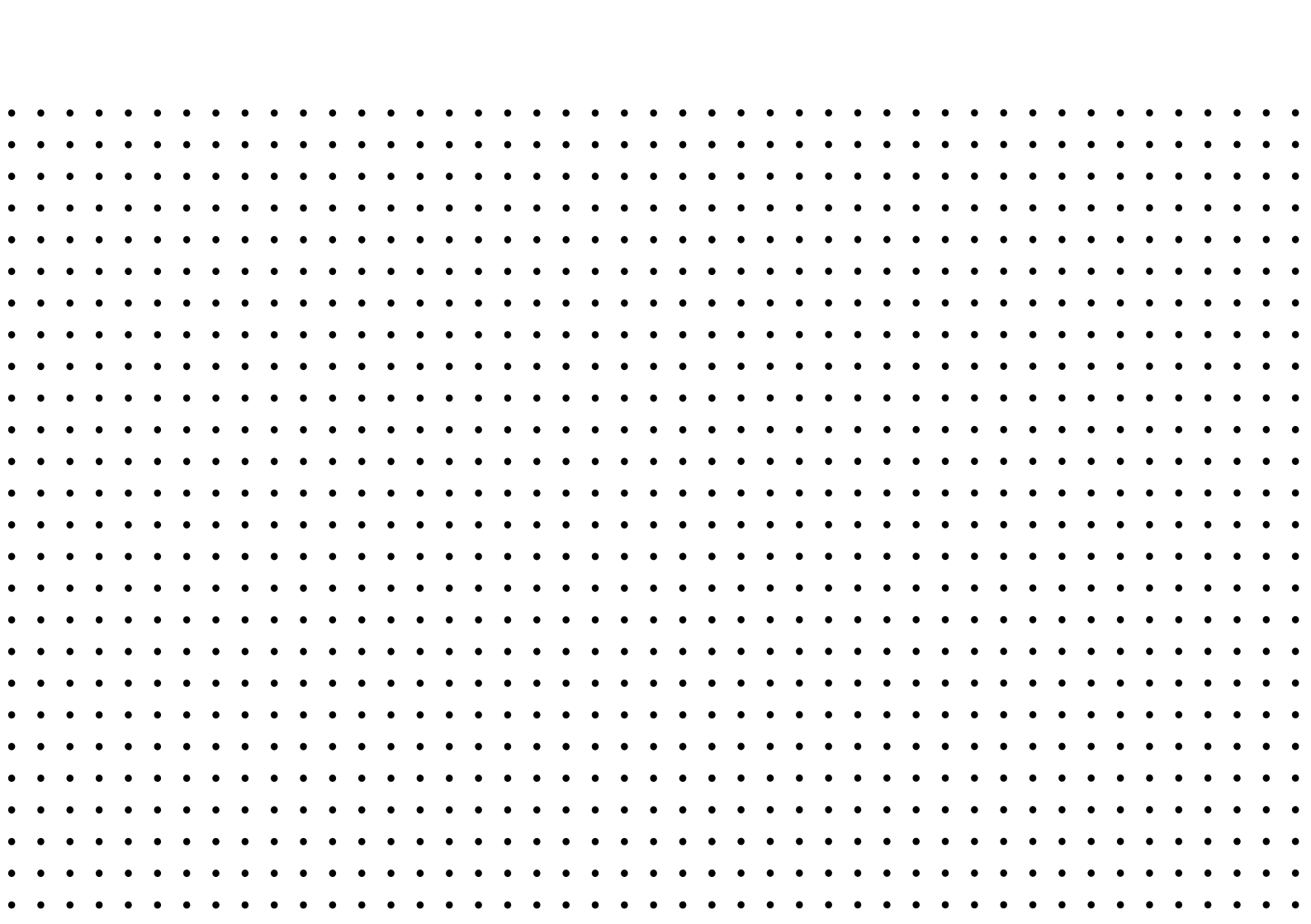
Et voila!
Discreet guidelines



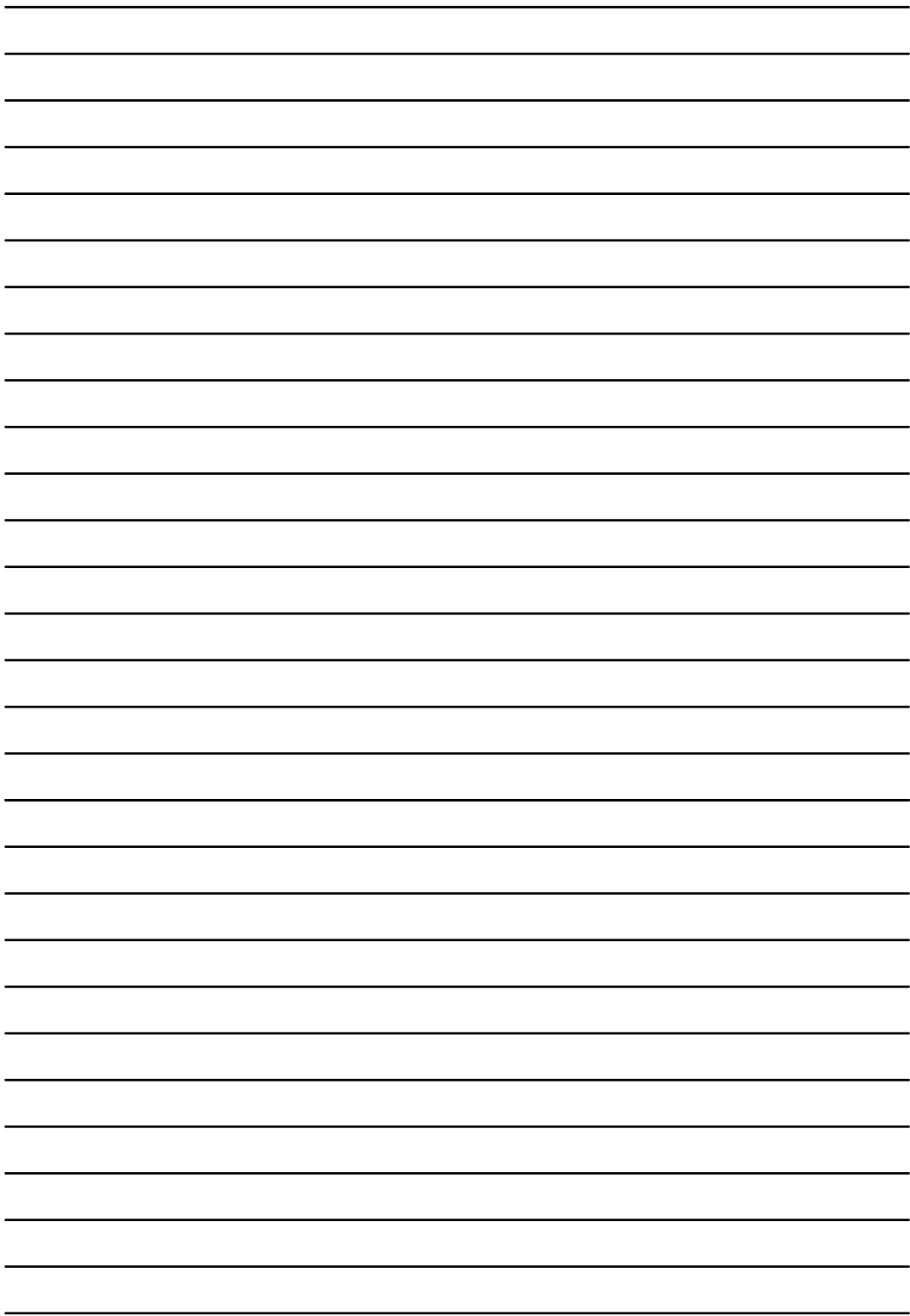
For more information and
FAQs please scan here

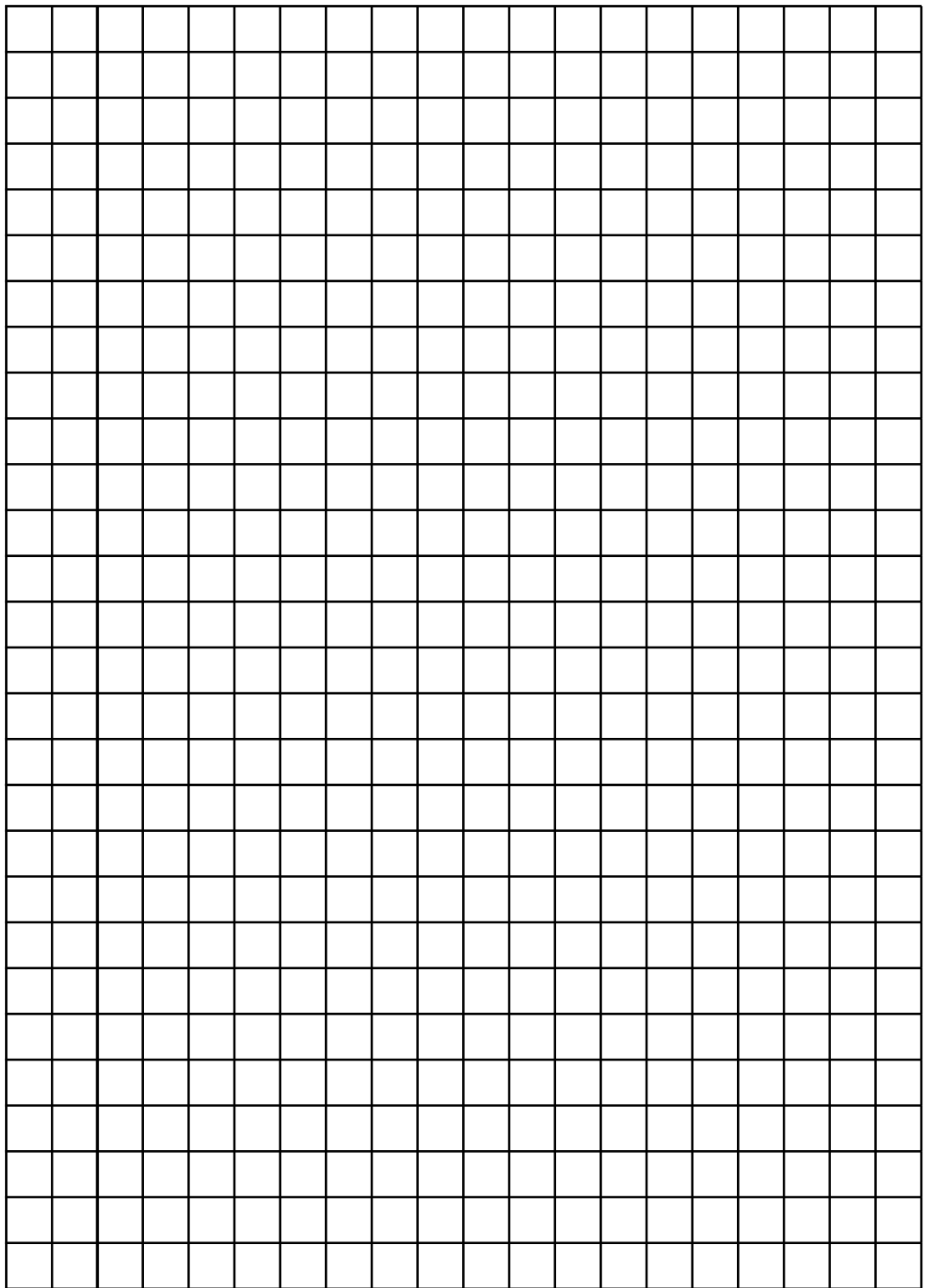
We'd love to keep growing our collection of Studio
Pad page guides, so if you've created your own, share
them with us at hello@tomstudio.co.uk

*tom's
studio*









○ _____

○ _____

○ _____

○ _____

○ _____

○ _____

○ _____

○ _____

○ _____

○ _____

○ _____

○ _____

○ _____

○ _____

○ _____

○ _____

○ _____

○ _____

M

T

W

T

F

S

S